

## 4600 PLUS LIFT & SLIDE

SYSTEM

### Sightlines

Frame 180 mm / 280 mm 3 rails /

380 mm 4 rails

Sash 80 mm

### Glazing

Max. 65 mm, Min. 22 mm

### Maximum Sash Dimensions

Width (L) 3300 mm, Height (H) 3500 mm

### Maximum Sash Weight

400 Kg

Consult maximum weight and dimensions according to typologies



4600 PLUS LIFT & SLIDE SYSTEM



- High thermal and acoustic performance
- Up to 3.3 by 3.3 meters per panel
- Maximum weight 400 Kg per panel
- Low threshold Part M compliant
- 50 mm interlock

**BFRC Rating**  
kWh/(m²·yr)

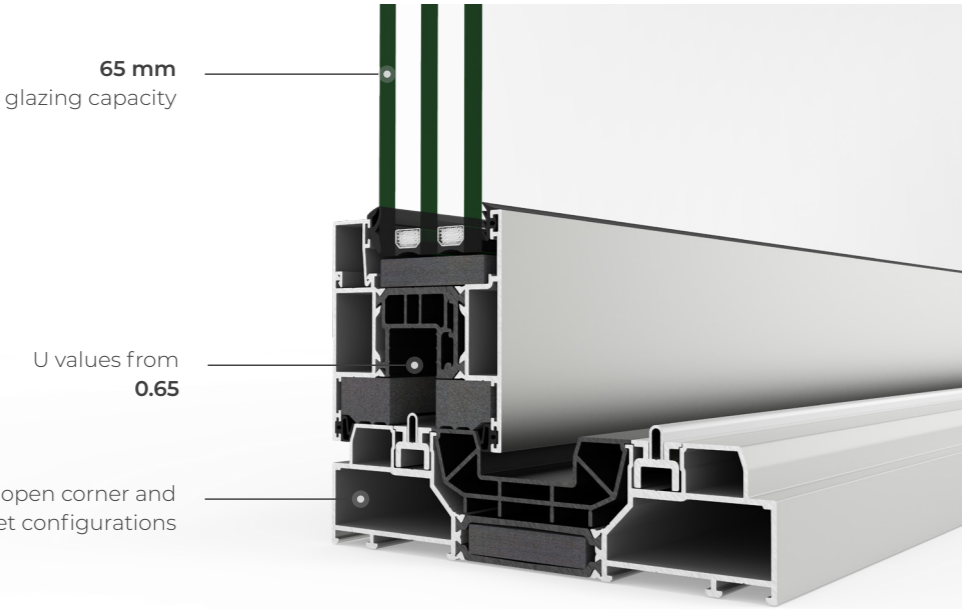
|             |   |     |
|-------------|---|-----|
| ≥20         | A | ++  |
| >10 to 20   | A | + ✓ |
| 0 to <10    | A |     |
| -10 to <0   | B |     |
| -20 to <-10 | C |     |
| -30 to <-20 | D |     |
| -50 to <-30 | E |     |

Triple glazing

4600 Plus Lift & Slide from Cortizo allows for the covering of large openings while ensuring exceptional thermal insulation. Its 80 mm deep sashes and special polyamides allow it to achieve a  $U_w$  transmittance of just 0,65 W/m²K, establishing itself as one of the sliding systems with the best thermal performance on the market. Furthermore, the perimeter interlock profile is reduced to 120 mm, allowing for an increased glazed surface and enhancing the entry of natural light into the rooms.



In progress

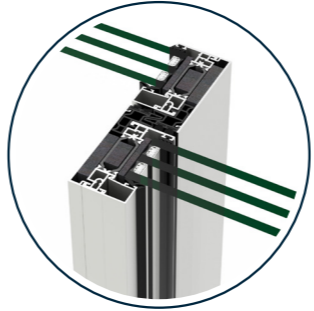


#### FEATURES

|                  |  |  |  |
|------------------|--|--|--|
| U value (I)      |  | Double glazing *<br>$U_w$ from ? (W/m²K) | Triple glazing *<br>$U_w \geq ?$ (W/m²K) |
| Air permeability |  | Class 4                                  |  |
| Water tightness  |  | Class E750*                              |  |
| Wind resistance  |  | Class C5**                               |  |
| Security test    |  | PAS24 ✓                                  | In progress                              |

\*Reference test 4.0 x 2.5 m / 1 sash + 1 fixed light

\*\*Reference test 4.0 x 2.5 m / 2 sashes



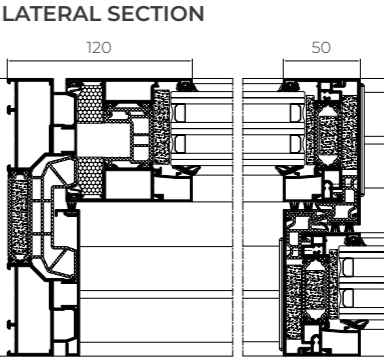
#### SLIM INTERLOCK

Possibility of a **reduced interlock section of 50 mm** in monorail frame (sash + fixed light) and 2 rail frame, allowing a larger glazed surface.

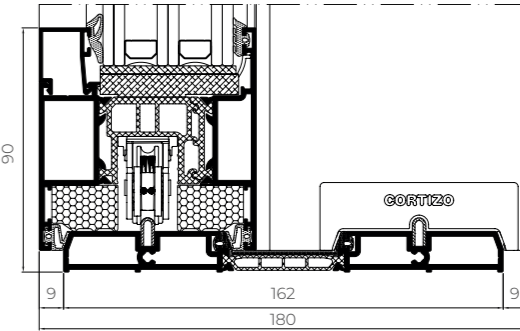


#### CONCEALED KEEPS

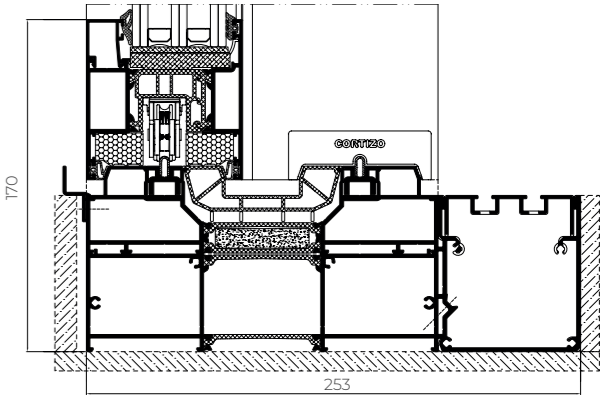
Total integration of the hardware, thus preventing snags and friction in the opening area.



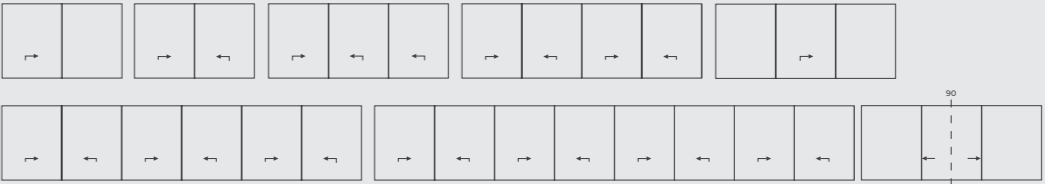
#### THRESHOLD



#### CONCEALED DRAINAGE SOLUTION



#### OPENING POSSIBILITIES



Sliding  
1 rail (1 sash + 1 fixed light), 2, 3 & 4 rails  
Possibility of 90° opening without mullion

