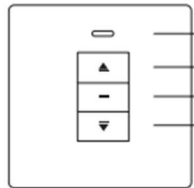


Titan Edge Air & S1 Lantern Electric Installation Guide

- All Edge Air rooflights and S1 Sheervent lanterns will come with a rocker switch. The rooflight/lantern needs to be wired into the rocker switch and then the rocker switch wired into the mains with 1.5mm, 3 core cable. The motor is 24v and the rocker switch provided is the DC converter. **DO NOT WIRE THE ROOFLIGHT STRAIGHT INTO THE MAINS - This will blow the motors.**

Front of rocker switch



Single channel controller

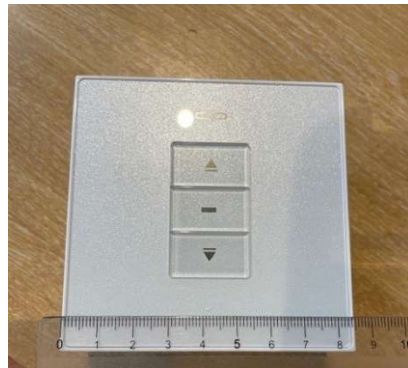
Back of rocker switch



**Brown Wire into +
Blue Wire into -**

Model	Vin	Vout	Iout	Frequency	Sensitivity	Size
LK-MR531	120/230VAC	120/230VAC	0.2A	433.92MHz	-100dBm	86*86*35mm

AC Input		AC Output		DC Input/ DC Output		Sensor	
L	Live Wire	L	Forward	+	24VDC Positive	V	12VDC+
N	Null Wire	R	Reverse	-	24VDC Negative	D	Down
E	Earth Wire	N	Neutral			U	Up
						G	Com



- The electrical wires come out of the flat rooflight on the right-hand side when looking down on the rooflight from above – see diagram below.
- For the S1 lantern opens the cable comes out of the motor – scan QR code below



Electric cable to be connected to rocker switch provided and mounted in wall.

Installation Notes

- Please observe the following provisions in accord with standard effective power.
- Do not use metal objects to touch of shade receiver, avoid the interference of receiving signals.
- Transmit distance: 50 meters without obstacle. 30 meters through wall
- The installation distance between the receiver and ground, between the receiver and the ceiling is more than 1.5m, between two receivers is more than 0.2m
- The main supply must be cut off before installing wiring.
- In order to prevent electrostatic interference, must ensure that the receiver is effectively grounded.
- After the installation, ensure the receiver and cable are not affected by tension.

Rocker Switch

- Operation Description
 - Choose channel you want to program.
- Matching Code
 - Power the controller on
 - Keep pressing STOP button on the controller for 5 seconds
 - Press UP button on the remote within 15 seconds
 - LED flashes 3 times and turns off
 - Codes are matched successfully
- Clearing Single Code
 - Power the controller on
 - Keep pressing STOP button on the controller for 5 seconds
 - Press DOWN button on the remote for 15 seconds
 - LED flashes 3 times and turns off
 - Code is cleared successfully
- Clearing All Code
 - Power the controller on
 - Keep pressing both of STOP and DOWN buttons on the controller for 5 seconds
 - LED flashes 3 times and turns off
 - All the codes matching the channel will be deleted after this operation
- Changing Direction
 - Power the controller on
 - Keep pressing both UP and DOWN buttons on the controller for 5 seconds
 - LED flashes 3 times and turns off

- Directions changed successfully
- Inching Mode
 - Power the controller on
 - Keep pressing both UP and STOP buttons on the controller for 5 seconds
 - LED flashes 3 times and turns off, setting is done.
 - Repeat the action, it turns to normal mode
 - It can work continuously when pressing UP/ DOWN for more than 1.5 seconds

Troubleshooting

- LED Flashes, receiver shut down – Check the connection of wires and check the receiver setting.
- LED on the transmitter is off or weak – Make sure the right installation of the battery and/or change the battery.
- The transmitter and the receiver work well, the motor does not work – Check the wiring of motor and make sure the motor no failure.