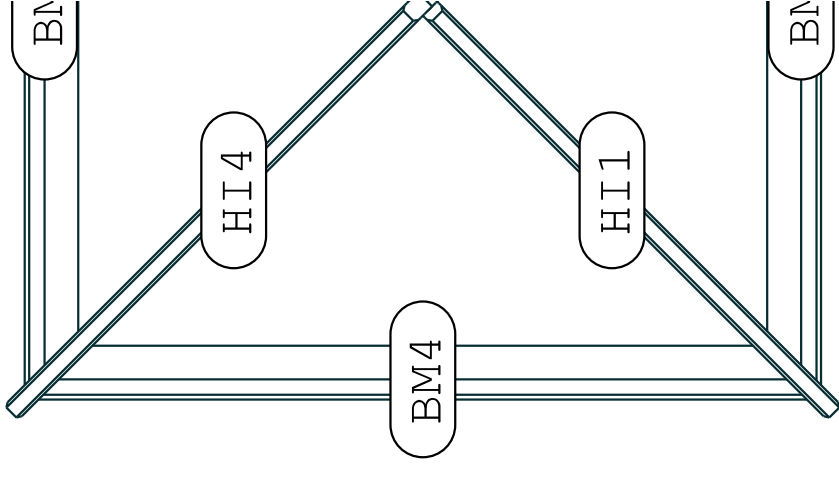


ATLAS SQUARE LANTERN INSTALLATION GUIDE

ATLAS
MORE SKY LESS ROOF™

SQUARE LANTERN ILLUSTRATION

To help with installation, the main lantern components are labeled with the drawings found in your kit instructions, as shown in the image below.



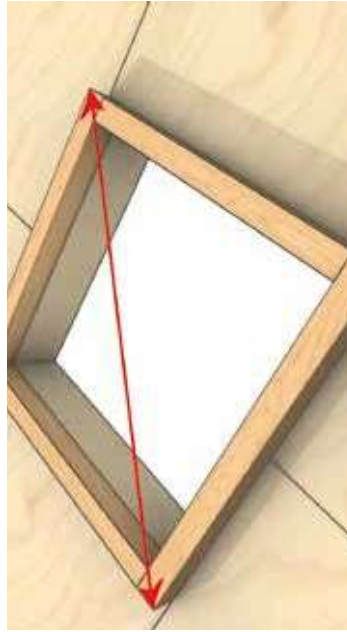
WELCOME TO THE ATLAS SQUARE LANTERN INSTALLATION GUIDE

This installation guide will ensure the quick and easy installation of your Atlas Square Lantern.

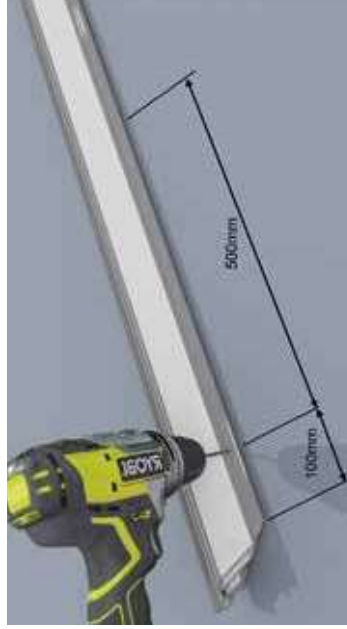
TOOLS YOU'LL NEED:

Screw Description

SQUARE LANTERN INSTALLATION



1 Ensure that the kerb upstand by others is square by checking the diagonals.



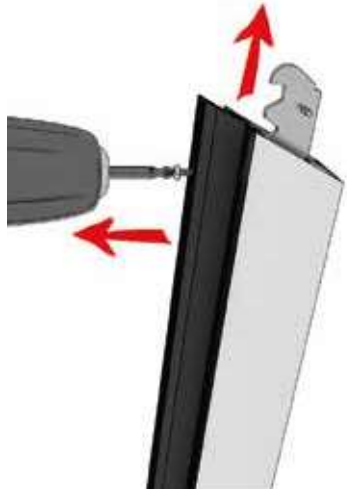
2 Pre-drill the ringbeam as shown, 100mm from the corners and then at 500mm centres.



3 Apply a generous bead of sealant to the top of the kerb upstand.



4 Lay the ringbeam out in accordance with the lengths of the kerb upstand and locate the adjacent cleat into the mating ringbeam. Apply sealant to the cut ends of the ringbeam.

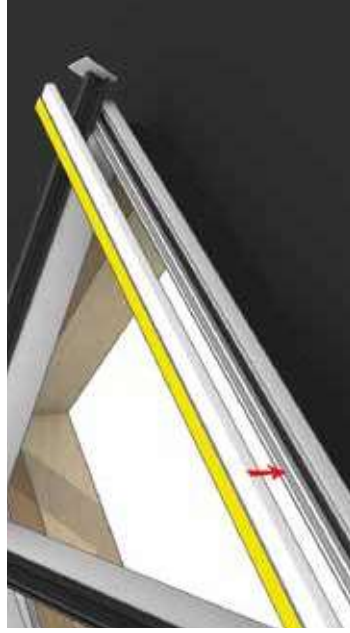


7 Slightly unscrew the fixing in the transom to release the connection bracket.



9 Re-tighten the screw on the top of the transom making sure the joint is tight.

SQUARE LANTERN INSTALLATION



13 Fit glazing support snap on trim between the rafter and the lantern frame.



14 Tap the trim onto the top of the rafter using a rubber mallet. If required, then peel back the corner of the protective tape and fully remove.



19 Before fitting the shorter pressure caps, ensure they are pushed up tight against the pressure plates, so the gaskets are touching.

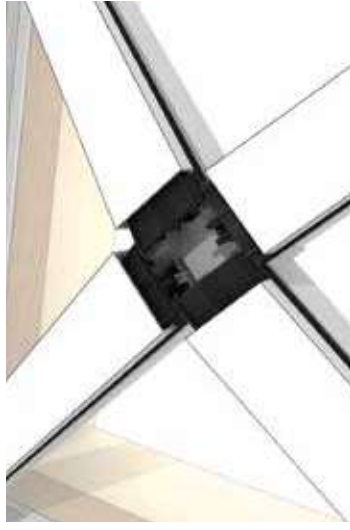


15 Apply a bead of sealant to glazing end closer and fit centrally to glass units.

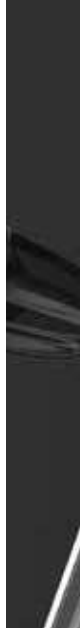
Note: Always use the correct polymer sealant for self-cleaning glass. Illustration shows underside of glass, note when fitting, drip faces down.



16 Fit the glazing around the roof and drop glass end closer behind the rafter end caps. Apply pressure to the adhesive on the glazing tape to secure the glass.



21 Continue to push down and snap on all the caps. If required, use a rubber mallet to push caps down tight.



ATLAS SQUARE LANTERN INSTALLATION GUIDE

ATLAS
MORE SKY LESS ROOF™