

# F82 PLUS

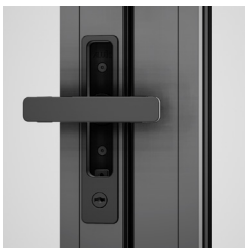
## Bifold Door



The F82 Plus Bifold Door System puts high performance and security front of mind, offering a wide range of configurations to support the bespoke requirements of your project. Multiple doors can be combined with open-in or open-out options in a variety of styles to create a wide expanse of opening.

The system is fully PAS 24 and Secured By Design-accredited, making it Document Q compliant. The full frame and cill have been designed to create a slimmer, symmetrical frame of 97mm combined with a reduced interlock sightline of 122mm, providing larger glazing areas without compromising performance. Thermal U-Values of 1.2 W/m<sup>2</sup>K (double glazed) and 0.9 W/m<sup>2</sup>K (triple glazed) assist with meeting the latest energy efficiency requirements.

Other key design features include a flush pop-out handle and contemporary traffic door handles. A new floating corner offers a true inside-out design, while the 110mm mid rail allows the creation of transoms in the door or solid panels in single and double doors for a uniform aesthetic.



### DESIGN FEATURES

- › Unique pop-up handle, cycle tested to 25,000 operations for up to 80 years of reliable use
- › Integrated cill profile clips onto the outer frame sides, reducing sightlines
- › Heavy-duty stainless steel compact rollers as standard
- › Full symmetrical frame sightline of 97mm
- › 122mm slimline interlock
- › Larger glazing area

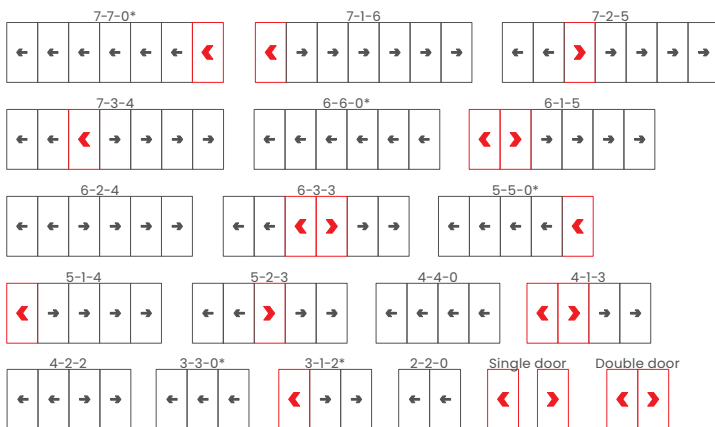
### OPTIONS

- › Square bead
- › Glazing sizing range of 28mm-44mm
- › Available in a range of opening configurations, including a floating corner
- › Available in single or dual colour polyester powder coating, texture and anodised finishes
- › All configurations available open-in and open-out
- › 110mm midrail - make single or double doors using transoms or solid panels
- › New sub cill range - position onto varying widths of construction using the 225mm, 150mm or 95mm options

## SPECIFICATIONS

Performance and accreditations	OPEN-IN	OPEN-OUT
U-Value (Double Glazing) (Ug: 1.0 W/m²K)	1.2 W/m²K	1.2 W/m²K
U-Value (Triple Glazing) (Ug: 0.7 W/m²K)	0.9 W/m²K	0.9 W/m²K
Air Permeability (Standard Threshold)	Class 3 (600 Pa)	Class 4 (600 Pa)
Water Tightness (Standard Threshold)	Class 5a (200Pa)	Class E900 (900 Pa)
Wind Resistance	Class B3 (1200Pa)	B3 (1200 Pa)
Security	PAS 24 & SBD	PAS 24 & SBD
<b>System</b>		
Depth	82MM	82mm
<b>Configurations</b>		
Opening	Open-In & Open-Out	Open-In & Open-Out
<b>Size and weight limits</b>		
Max Leaf Height	2500mm std/ 3000 mm*	2500mm std/ 3000 mm*
Max Leaf Width	1200mm	1200mm
Max Vent Weight	150kg	150kg
<b>Glazing</b>		
Glazing Options	Internal Bead	Internal Bead
Glazing Thickness	28mm-44mm	28mm-44mm
<b>System Features</b>		
Single Colour	✓	✓
Dual Colour	✓	✓
Textured Finish	✓	✓
Anodised Finish	✓	✓
Multi-Point Locking	✓	✓
Sightline (Head)	97mm	97mm
Sightline (Cill)	97mm	97mm
Sightline (Jamb)	97mm	97mm
Sightline (Meeting Stile)	122mm	122mm

## CONFIGURATIONS



\*Opposite handling available on all configurations. For more options, refer to the Technical Manual.

### KEY



## OTHER OPTIONS AVAILABLE

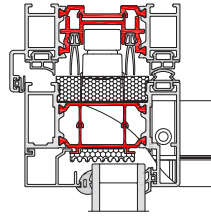


\*The maximum height and panel width for the F82 Folding Sliding Door System are co-dependent and also dictated by the design wind load where the doors are being installed. Based on the site design wind load that the doors are subjected to this will influence the maximum height and width [per panel] to which the doors can be manufactured.

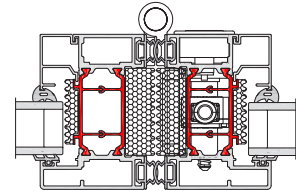
## CAD CROSS SECTIONS AND THERMAL PROFILE

Additional details are available on request.

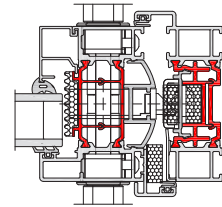
➤ F82 PLUS HEAD



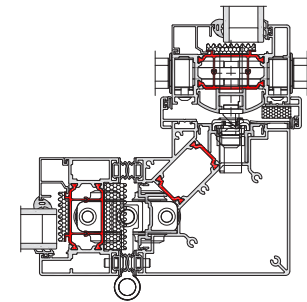
➤ F82 PLUS INTERLOCK



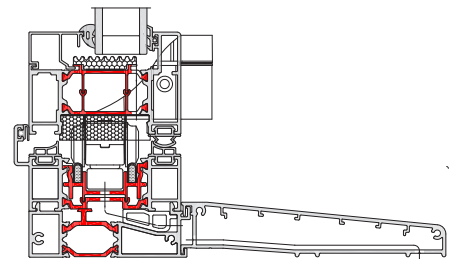
➤ F82 PLUS LOCKING JAMB



➤ F82 PLUS FLOATING CORNER POST



➤ F82 PLUS CILL



➤ F82 PLUS THERMAL PROFILE

